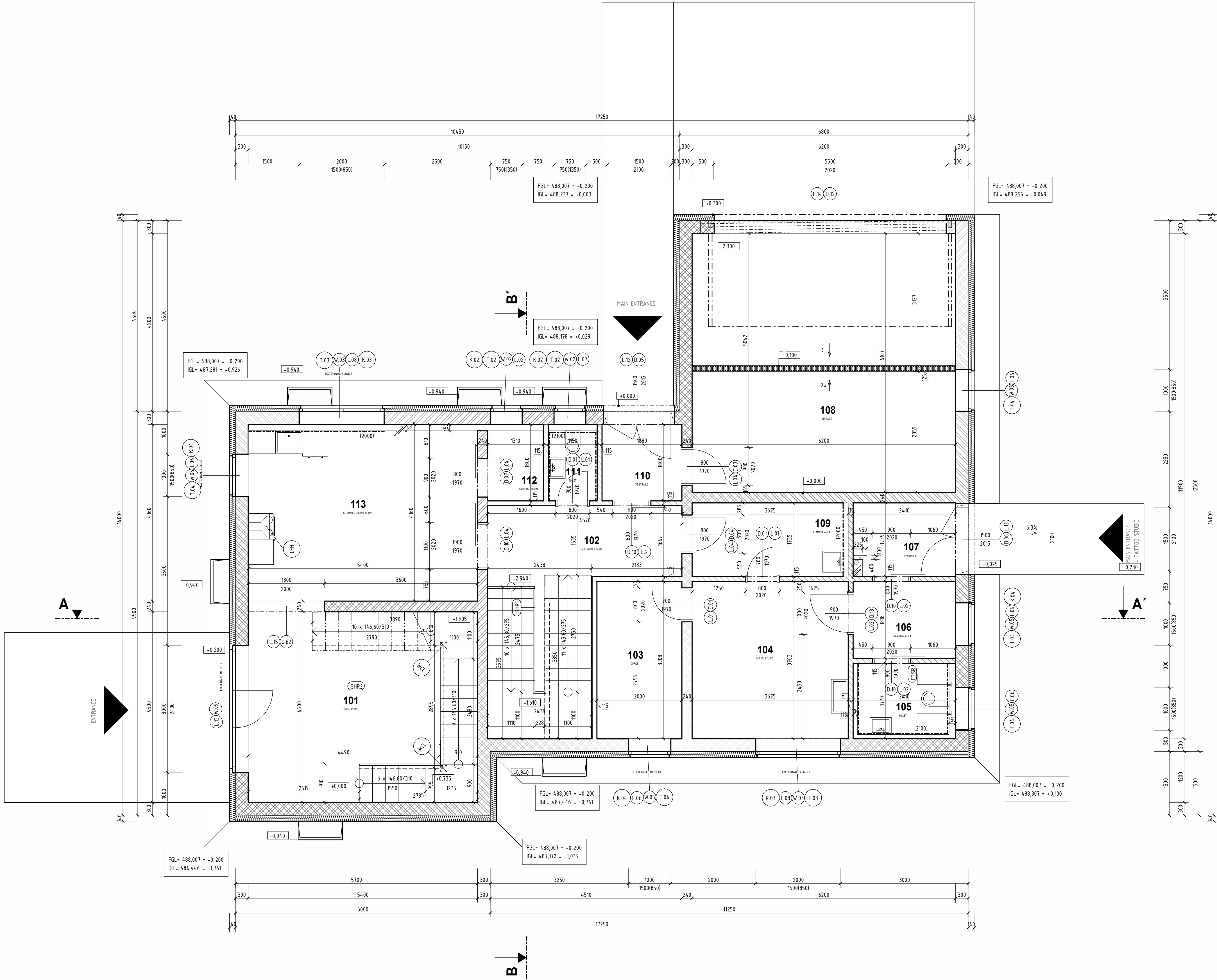


D.1.1 - 02 | FIRST FLOOR PLAN

SCALE 1:50, FAMILY HOUSE WITH TATTOO STUDIO



LEGEND

FLOOR NUMBER	NAME	AREA [m2]	FINISHES		
			FLOORING FINISH	CEILING FINISH	WALL FINISH
1NP					
101	LIVING ROOM	24,30	LAMINATED FLOORING	BEST PANEL + ACRYLATE PAINT	LIME-CEMENT CORE PLASTER WITH STUCCO PLASTER
102	HALL WITH STAIRS	17,00	CERAMIC FLOOR	BEST PANEL + ACRYLATE PAINT	LIME-CEMENT CORE PLASTER WITH STUCCO PLASTER
103	OFFICE	7,41	CERAMIC FLOOR	BEST PANEL + ACRYLATE PAINT	LIME-CEMENT CORE PLASTER WITH STUCCO PLASTER
104	TATTOO STUDIO	13,61	CERAMIC FLOOR	BEST PANEL + ACRYLATE PAINT	CERAMIC TILES
105	TOILET	3,61	CERAMIC FLOOR	BEST PANEL + ACRYLATE PAINT	LIME-CEMENT CORE PLASTER WITH STUCCO PLASTER
106	WAITING AREA	4,38	CERAMIC FLOOR	BEST PANEL + ACRYLATE PAINT	LIME-CEMENT CORE PLASTER WITH STUCCO PLASTER
107	VESTIBULE	4,02	CERAMIC FLOOR	BEST PANEL + ACRYLATE PAINT	LIME-CEMENT CORE PLASTER WITH STUCCO PLASTER
108	GARAGE	37,87	PVC FLOOR	BEST PANEL + ACRYLATE PAINT	LIME-CEMENT CORE PLASTER WITH STUCCO PLASTER
109	COMMON AREA	6,20	CERAMIC FLOOR	BEST PANEL + ACRYLATE PAINT	LIME-CEMENT CORE PLASTER WITH STUCCO PLASTER
110	VESTIBULE	3,38	CERAMIC FLOOR	BEST PANEL + ACRYLATE PAINT	LIME-CEMENT CORE PLASTER WITH STUCCO PLASTER
111	TOILET	1,90	CERAMIC FLOOR	BEST PANEL + ACRYLATE PAINT	CERAMIC TILES
112	STORAGE ROOM	2,16	CERAMIC FLOOR	BEST PANEL + ACRYLATE PAINT	LIME-CEMENT CORE PLASTER WITH STUCCO PLASTER
113	KITCHEN + DINING ROOM	21,65	CERAMIC FLOOR	BEST PANEL + ACRYLATE PAINT	LIME-CEMENT CORE PLASTER WITH STUCCO PLASTER
		147,49			

LEGEND OF MATERIALS

- LOAD-BEARING MASONRY – GROUND CERAMIC BLOCK, STRENGTH CLASS P15/P10, GROUND CLAY BLOCK FOR 300 mm WALL THICKNESS, LAID WITH THIN-LAYER MORTAR
WALLS FOUNDED ON SYSTEM FOUNDATION BLOCK 300 mm THICK, WITH FOUNDATION MORTAR
- LOAD-BEARING MASONRY – GROUND CERAMIC BLOCK, STRENGTH CLASS P15/P10, GROUND CLAY BLOCK FOR 240 mm WALL THICKNESS, LAID WITH THIN-LAYER MORTAR
- NON-LOAD-BEARING MASONRY – GROUND CERAMIC BLOCK, STRENGTH CLASS P10, GROUND CLAY BLOCK FOR 115 mm WALL THICKNESS, LAID WITH THIN-LAYER MORTAR
- THERMAL INSULATION MADE OF EXPANDED POLYSTYRENE (EPS), THICKNESS ACCORDING TO LAYER COMPOSITION, STRAIGHT EDGE, DECLARED THERMAL CONDUCTIVITY COEFFICIENT $\lambda_D = 0,031 \text{ W}\cdot\text{m}^{-1}\cdot\text{K}^{-1}$, COMPRESSIVE STRENGTH AT 10% DEFORMATION $\sigma_{10\%} = 70 \text{ kPa}$ (DEPENDING ON LAYER COMPOSITION)
- PLAIN CONCRETE WITH GLASS FIBRE MAT – CLASS AND EXPOSURE ACCORDING TO THE STRUCTURAL LAYER COMPOSITION

NOTES

- CONSTRUCTION LAYERS: SEE CONSTRUCTION LAYER BOOK
- CEILINGS: SEE CEILING SCHEDULE
- PARTITION WALLS: 100 MM THICK PLASTERBOARD, 1500 MM HEIGHT, TILED
- HANDRAILS WILL BE INSTALLED AT HEIGHTS OF 900 MM AND 750 MM ABOVE FLOOR LEVEL
HANDRAIL ENDS MUST EXTEND AT LEAST 150 MM BEYOND THE FIRST AND LAST STEP
HANDRAIL DIAMETER 84,0 MM, OFFSET FROM THE WALL BY 60 MM
- FIRST ROW OF CERAMIC BLOCKS: TO BE LAID USING 300 MM STARTER BLOCKS ON BEDDING MORTAR
- PERIMETER INSULATION AT PLINTH: XPS 130 MM, EXTENDED UP TO 300 MM ABOVE LEVEL
- WALL CLADDING IN FOYER AND HALL: NON-COMBUSTIBLE CLADDING ON ALUMINUM FRAME
- WINDOWS: SOME EQUIPPED WITH EXTERIOR ALUMINUM BLINDS MOUNTED IN LINTELS
- LINTELS L13 AND L14: CERAMIC LINTELS, MIN. BEARING LENGTH 250 MM
- ALL DIMENSIONS MUST BE VERIFIED ON SITE ACCORDING TO THE ACTUAL CONDITIONS; THIS DOCUMENTATION DOES NOT REPLACE MANUFACTURER'S SHOP DRAWINGS!
- FOR DOOR AND WINDOW OPENINGS, THE STRUCTURAL OPENING IS DIMENSIONED
- IN CERAMIC MASONRY, IT IS POSSIBLE TO MAKE SHALLOW CONTINUOUS GROOVES TO BE FILLED WITH MORTAR. INSTALLATIONS SHOULD BE INSTALLED IN THE FLOOR OR IN SERVICE WALLS
- IN SANITARY FACILITIES, A WATERPROOFING COATING MUST BE APPLIED OVER THE ENTIRE FLOOR AREA BEFORE THE FLOOR FINISH IS LAID. THE COATING MUST EXTEND AT LEAST 100 mm UP THE WALLS

REFERENCES TO ANNEXES

- (Dxx) BOOK OF INTERIOR DOORS
- (Txx) BOOK OF CARPENTRY PRODUCTS
- (Wxx) BOOK OF WINDOWS AND EXTERIOR DOORS
- (Kxx) BOOK OF SHEET METAL PRODUCTS
- (Lxx) BOOK OF LINTELS


OTHER PRODUCTS

- (SHR1) STAIRS HANDRAIL - WOODEN
- (SHR2) STAIRS HANDRAIL - STEEL
- (FTSR) FOLDABLE TOILET SUPPORT RAIL
- (FH) CARBON FILTER HOOD
- (WC1) WOODEN SUPPORTING COLUMN FOR STAIRS 150X150

LIST OF LINTELS

SYMBOL	NAME OF LINTEL	DIMENSION	No. OF LINTELS PER 1 ASSEMBLY
L01	CERAMIC LINTEL KP11S	1000x115x71	1
L02	CERAMIC LINTEL KP11S	1250x115x71	1
L04	CERAMIC LINTEL KP11S	1250x115x71	2
L06	CERAMIC LINTEL KP7	1250x7x23,8	4
L07	CERAMIC LINTEL KP7	1000x7x23,8	4
L08	CERAMIC LINTEL KP7	2250x7x23,8	4
L12	CERAMIC LINTEL KP7	2000x7x23,8	4
L13	CERAMIC LINTEL KP7	3500x7x23,8	4
L14	CERAMIC LINTEL XXL	6000x7x23,8	4

±0,000 = 488,3 m.a.s.l., B.H.S
/ COORDINATE SYSTEM S-JTSK

COURSE	BACHELORS' THESIS		
DRAWN BY	ADELA MATUŠOVÁ		
SUPERVISED BY	PROF. ING. JITKA MOHELNÍKOVÁ, PH.D.		
INVESTOR	-		
LOCATION	Krokočín, č. p. 730/2 a 728/č, okres Třebíč, Kraj Vysočina		
PROJECT TITLE	FAMILY HOUSE WITH TATTOO STUDIO		
BUILDING OBJECT	SO 01	PAPER FORMAT	841x594 (A1)
PART	D.1.1 ARCHITECTURAL BUILDING SOLUTION		DATE 20.5.2025
DRAWING TITLE:	FIRST FLOOR PLAN		PROJ. PHASE DPS
		SCALE 1:50	DRAWING NO. D.1.1.02